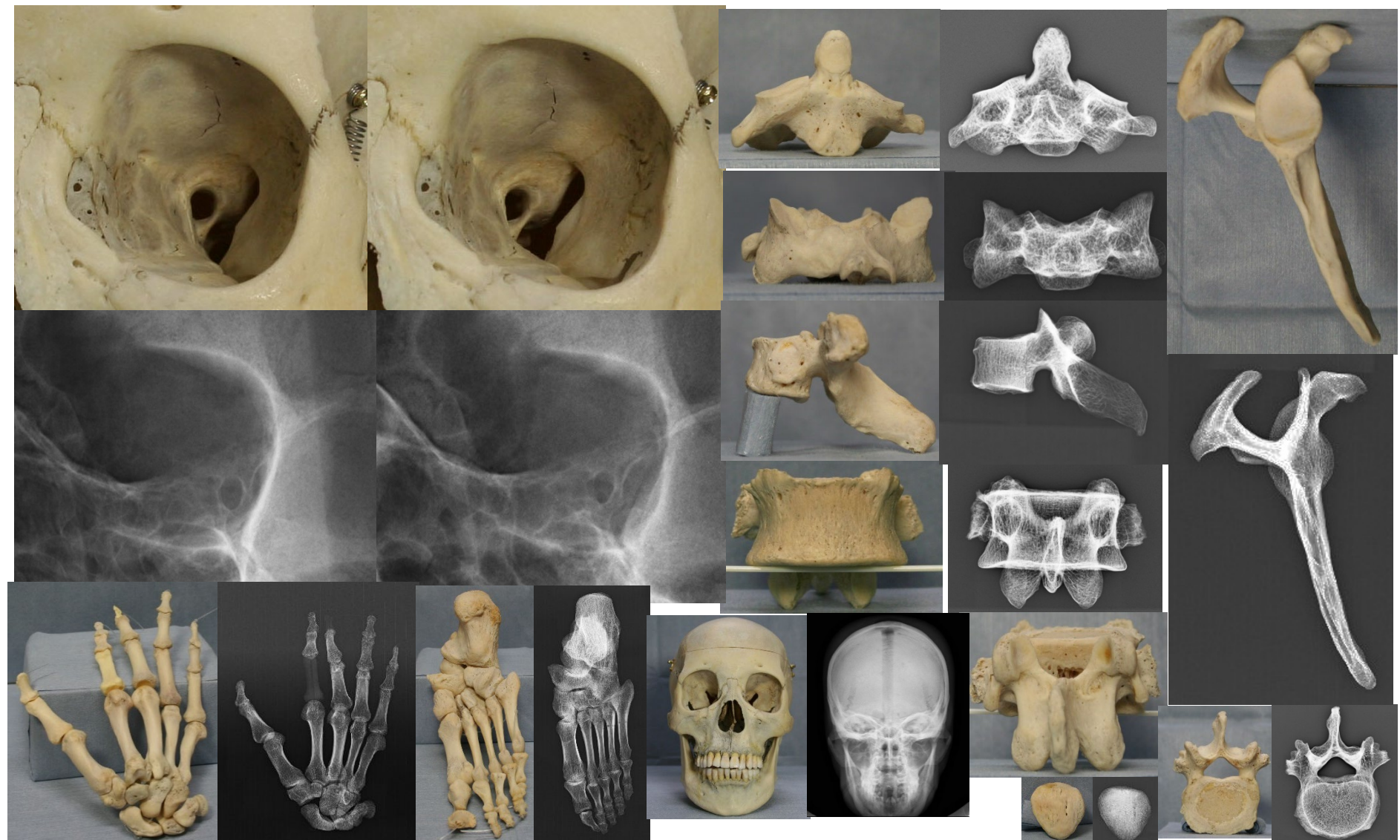


骨標本X線ステレオ解剖図

プレゼントPDF用

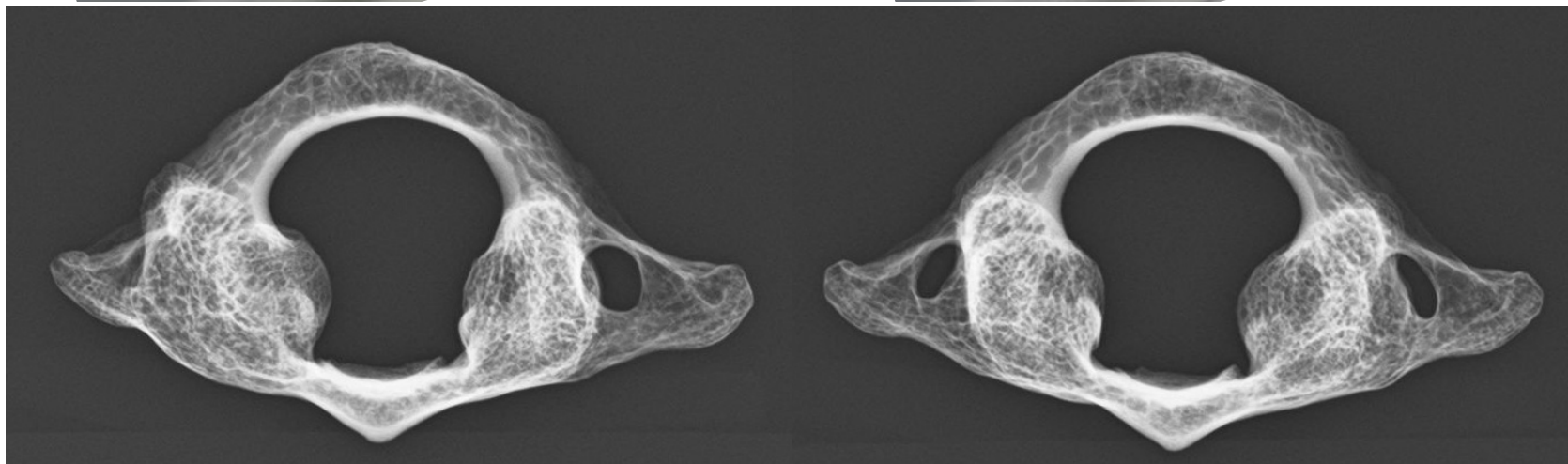
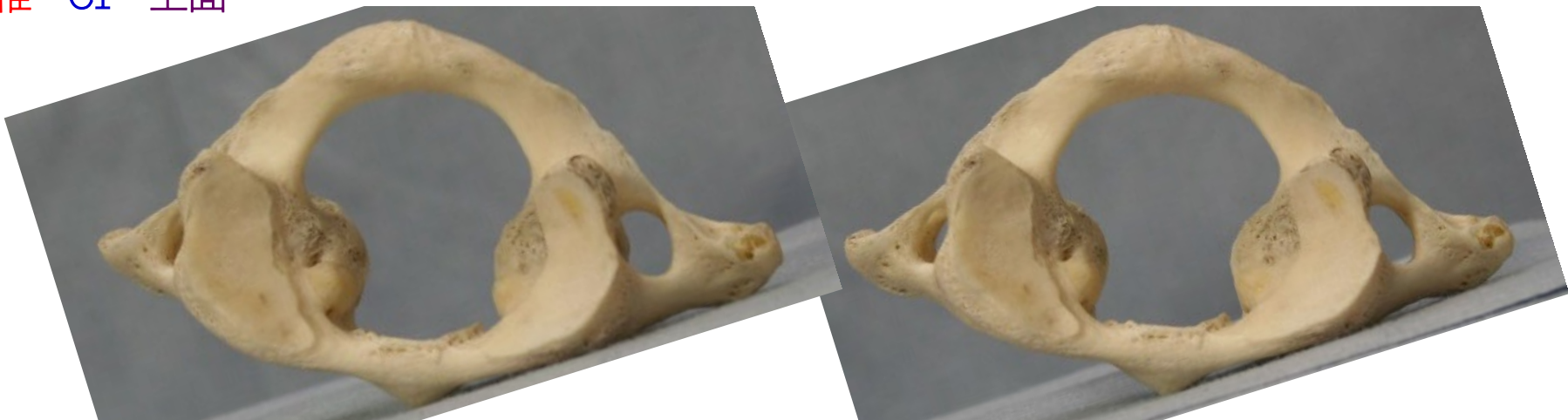


平成26年度(2014年9月21日) 第30回日本放射線技師学術大会(大分県別府市) 学会賞めじろん賞受賞

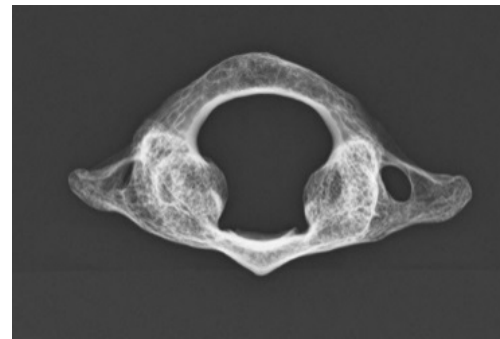
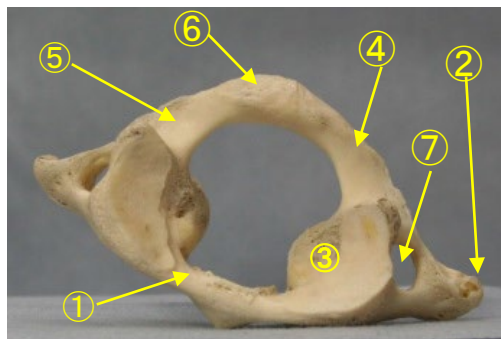
監修 香川大学医学部 組織細胞生物学 教授 荒木 伸一
作成 香川大学医学部附属病院 放射線部 勢川 博雄



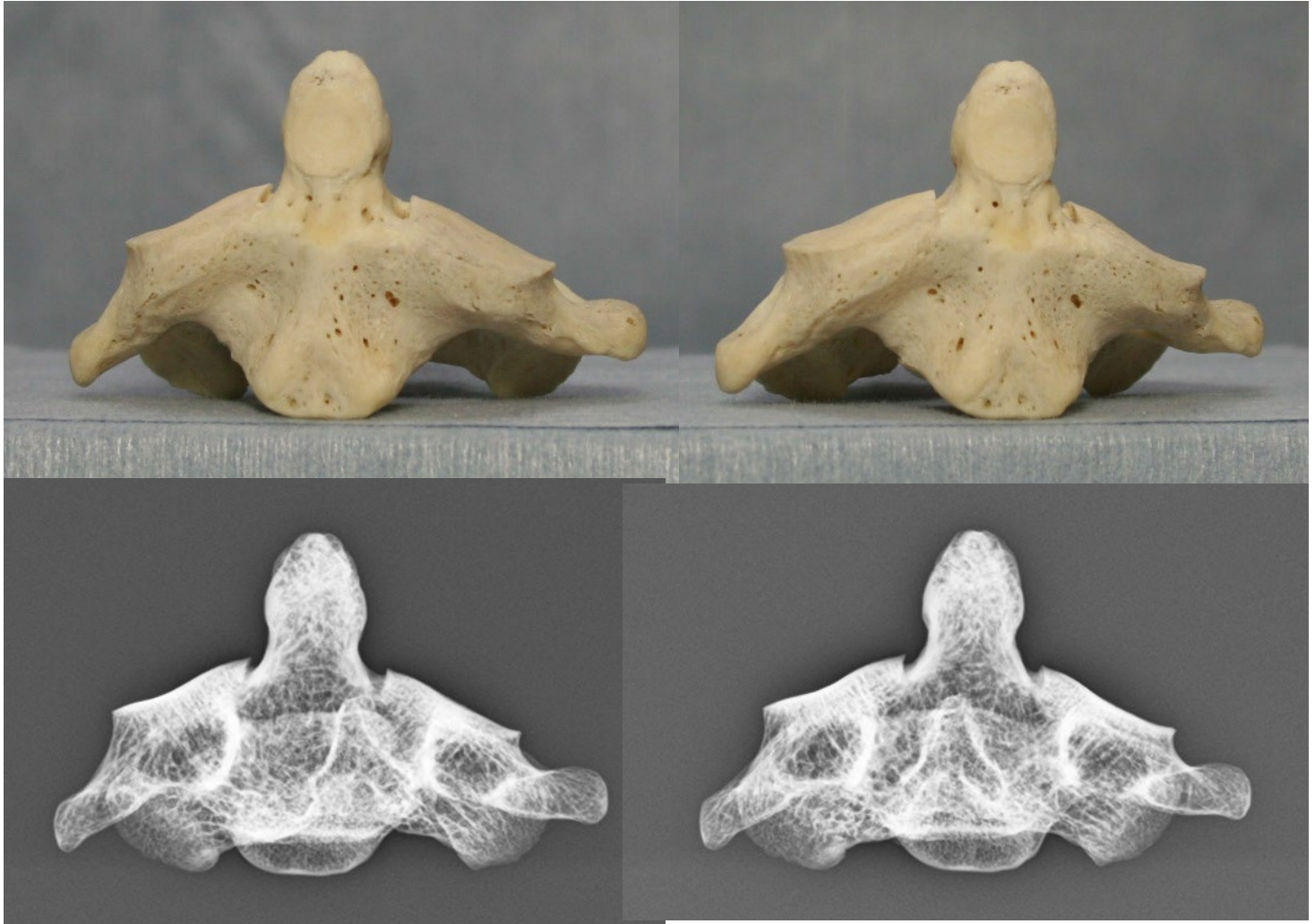
頸椎 C1 上面



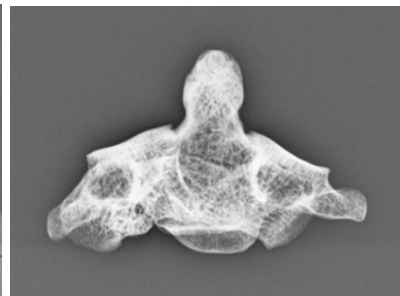
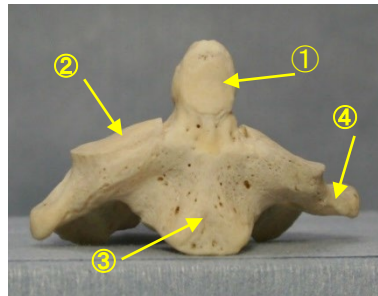
- ① 前弓 anterior arch
- ② 橫突起 transverse process
- ③ 上關節窩 superior articular facet
- ④ 後弓 posterior arch
- ⑤ 椎骨動脈溝 groove for vertebral artery
- ⑥ 後結節 posterior tubercle
- ⑦ 橫突孔 foramen of transverse process



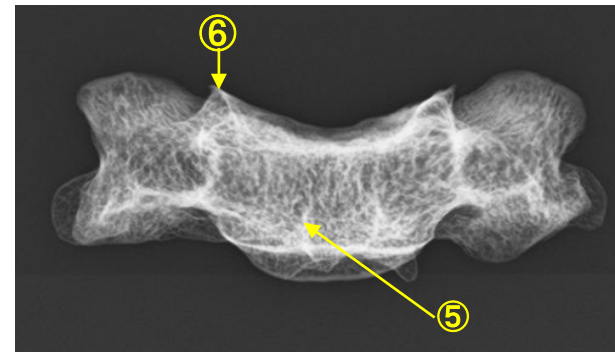
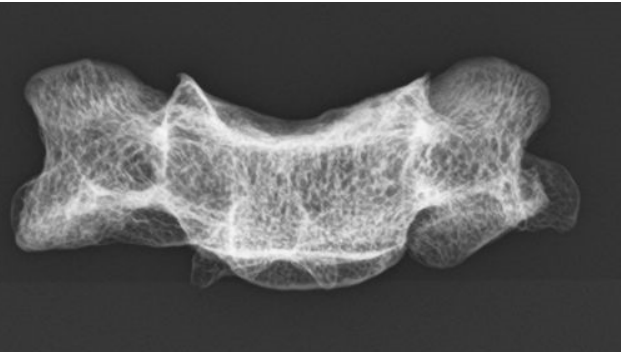
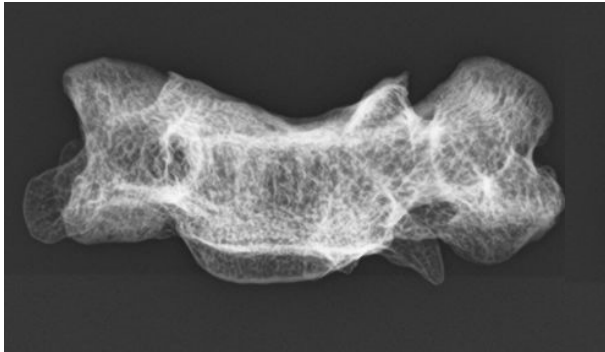
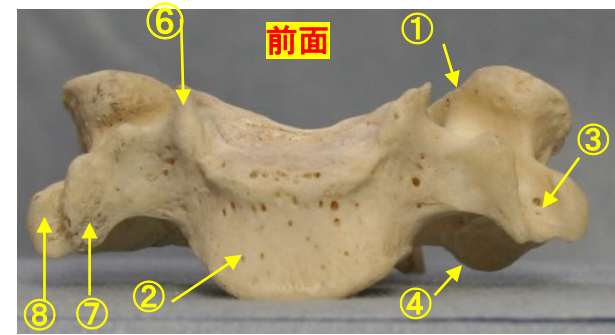
頸椎 C2 前面



- ① 齒突起 dens
- ② 上關節面(上關節突起關節面)
superior articular surface
- ③ 椎体 vertebral body
- ④ 横突起と横突孔 transverse
process and foramen



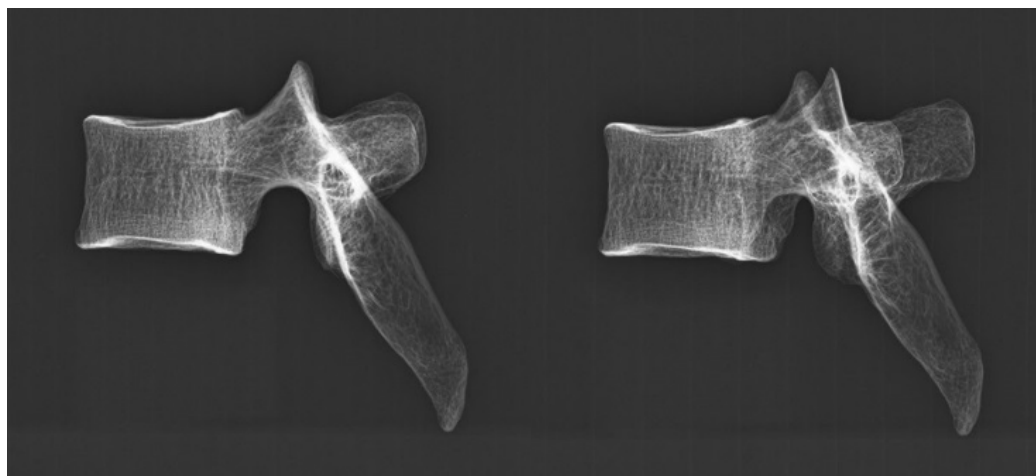
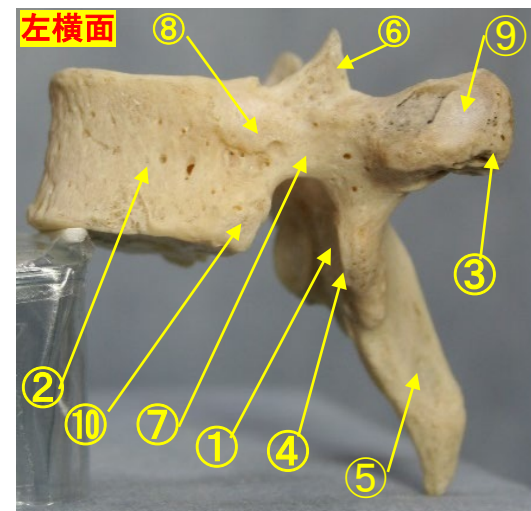
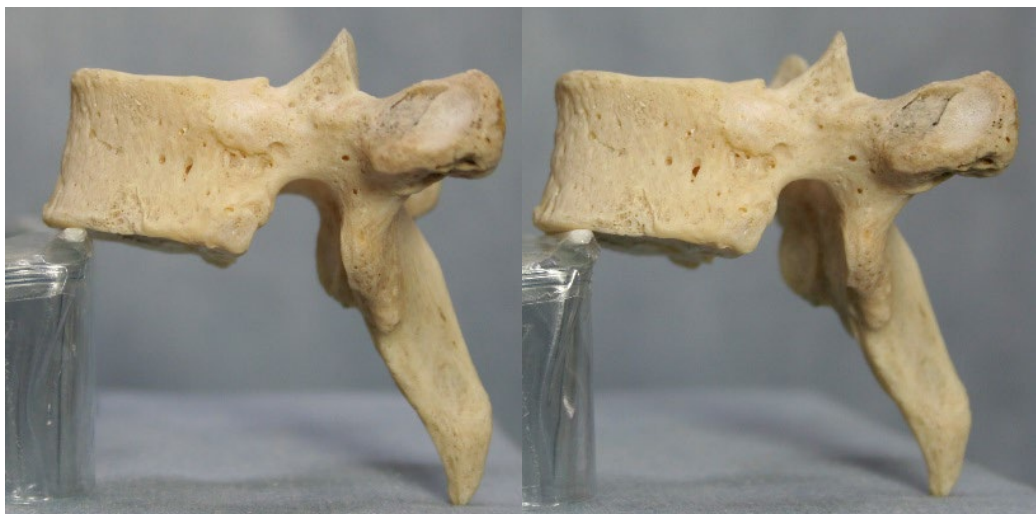
頸椎 C4 前面



- ①上関節面(上関節突起関節面) superior articular surface
- ②椎体 vertebral body
- ③横突起と横突孔 transverse process and foramen
- ④下関節突起 inferior articular process
- ⑤棘突起 spinous process

- ⑥後外側唇 posteriolateral lip
- ⑦横突起の前結節 anterior tubercle of transverse process
- ⑧横突起の後結節 posterior tubercle of transverse process

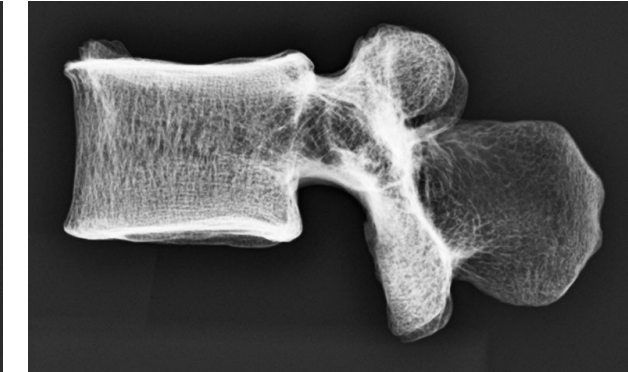
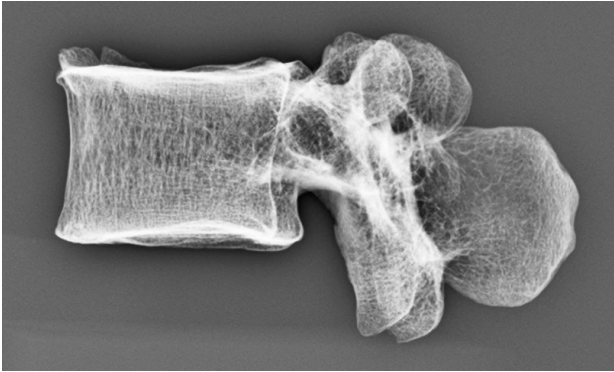
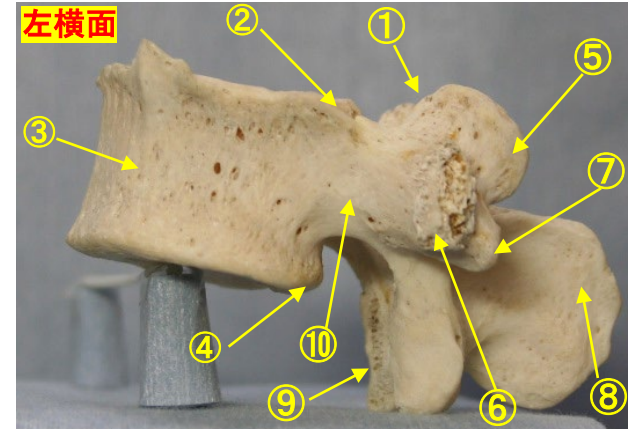
胸椎 Th5 側面



- ① 下關節面(下關節突起關節面) inferior articular surface
- ② 椎體 vertebral body
- ③ 橫突起 transverse process
- ④ 下關節突起 inferior articular process
- ⑤ 棘突起 spinous process

- ⑥ 上關節突起 superior articular process
- ⑦ 椎弓根 pedicle
- ⑧ 上肋骨窩 superior costal facet
- ⑨ 橫突肋骨窩 costal facet of transverse process
- ⑩ 下肋骨窩 inferior costal facet

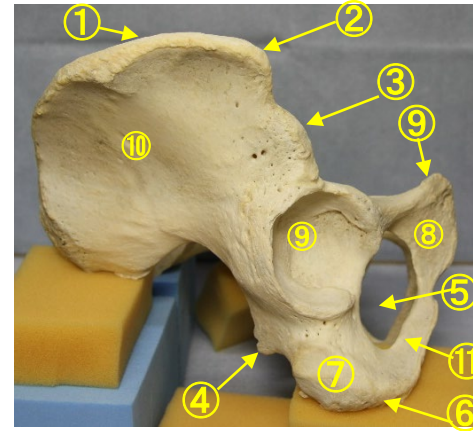
腰椎 L4 側面



- ①上關節突起 superior articular process
- ②上椎切痕 superior vertebral notch
- ③椎体 vertebral body
- ④下椎切痕 inferior vertebral notch
- ⑤乳頭突起 mamillary process
- ⑥肋骨突起(橫突起) transverse process
- ⑦副突起 accessory process

- ⑧棘突起 spinous process
- ⑨下關節突起 inferior articular process
- ⑩椎弓根 pedicle

骨盤 Pelvis 側面

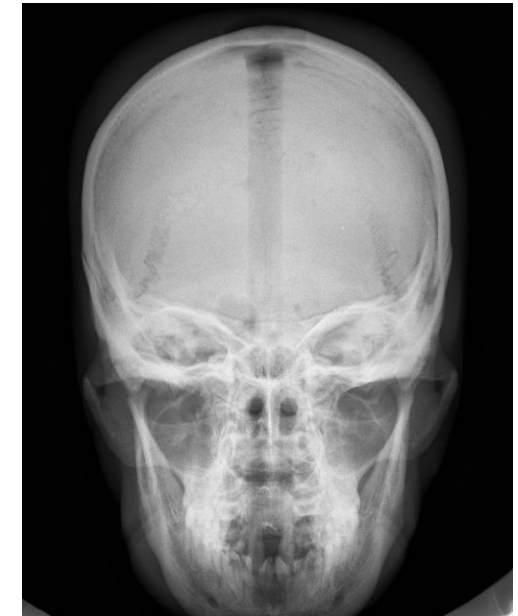
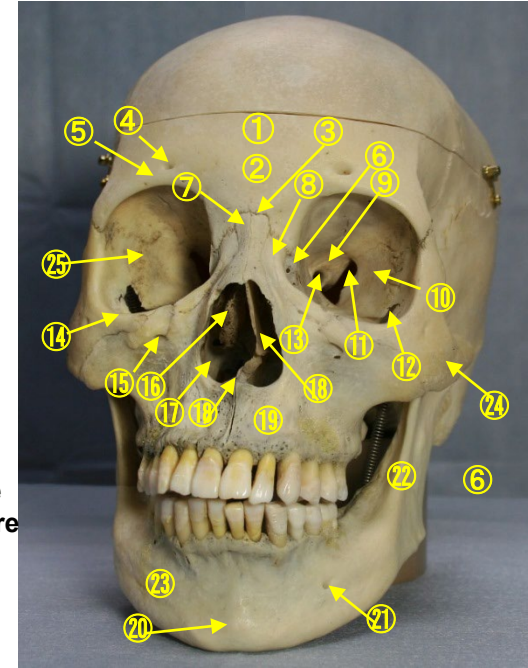


- | | | | |
|--------|-------------------------------|------|------------------|
| ①腸骨稜 | iliac crest | ⑦坐骨体 | body of ischium |
| ②上前腸骨棘 | anterior superior iliac spine | ⑧恥骨体 | body of pubis |
| ③下前腸骨棘 | anterior inferior iliac spine | ⑨寬骨臼 | acetabulum |
| ④坐骨棘 | ischial spine | ⑩腸骨体 | body of ilium |
| ⑤閉鎖孔 | obturator foramen | ⑪坐骨枝 | ramus of ischium |
| ⑥恥骨結節 | pubic tuberosity | | |

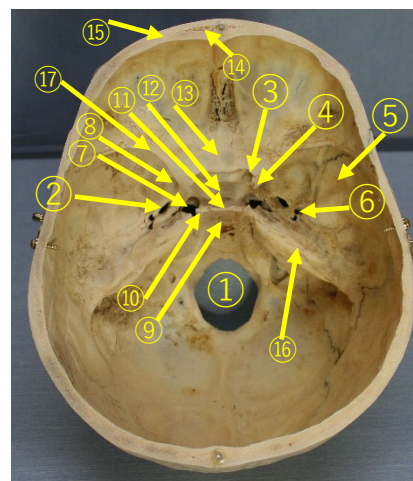
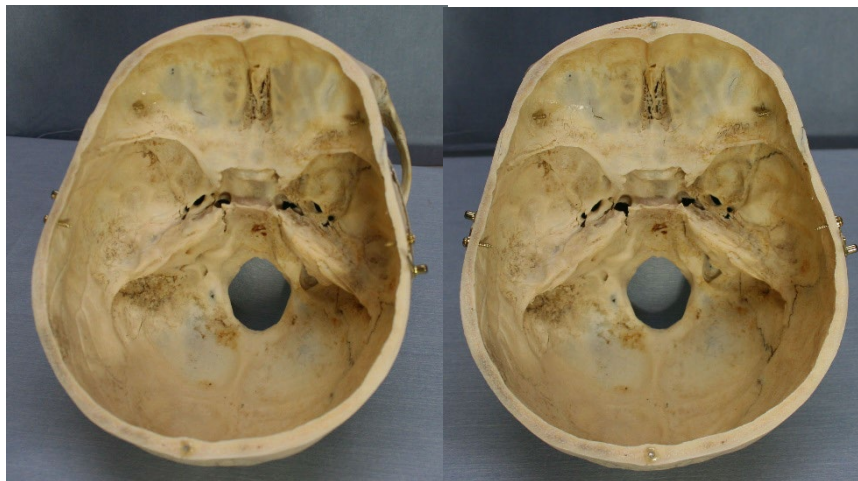
頭蓋骨 Cranial bones 前面



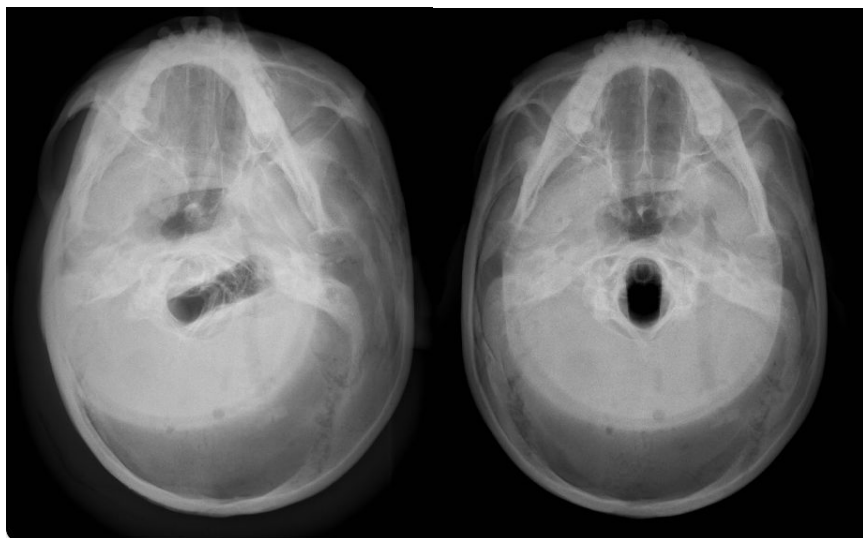
- ①前頭骨 frontal bone
- ②眉間 glabella
- ③ナジオン nasion
- ④眼窩上孔
supra-orbital foramen
- ⑤眼窩上縁 supra-orbital margin
- ⑥涙骨 lacrimal bone
- ⑦鼻骨 nasal bone
- ⑧上顎骨前頭突起
frontal process of maxilla
- ⑨蝶形骨の小翼
lesser wing of sphenoid bone
- ⑩蝶形骨の大翼
greater wing of sphenoid bone
- ⑪上眼窩裂 superior orbital fissure
- ⑫下眼窩裂 inferior orbital fissure
- ⑬視神経管 optic canal
- ⑭眼窩下縁 infra-orbital margin
- ⑮眼窩下孔 infra-orbital foramen
- ⑯中鼻甲介 middle nasal concha
- ⑰下鼻甲介 inferior nasal concha
- ⑱前鼻棘 anterior nasal spine
- ⑲上顎骨 maxilla
- ⑳オトガイ隆起
mental protuberance
- ㉑オトガイ孔 mental foramen
- ㉒下顎枝 ramus of mandible
- ㉓下顎体 body of mandible
- ㉔頬骨 zygomatic bone
- ㉕眼窩 orbit



頭蓋底 (Axial of head view)



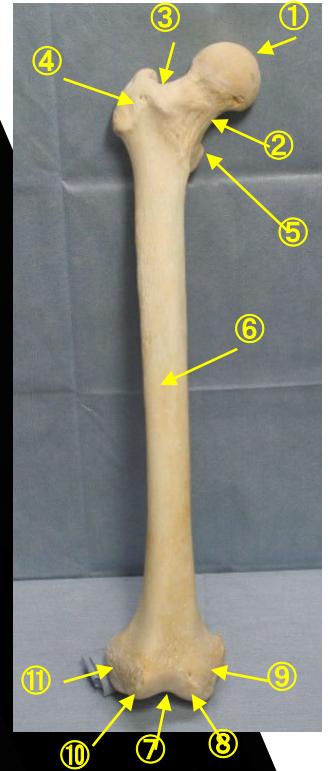
- ①大後頭孔
foramen magnum
- ②卵円孔
foramen ovale
- ③視神経管
optic canal
- ④前床突起
anterior clinoid process
- ⑤側頭骨の鱗部
squamous part of temporal
- ⑥棘孔
foramen spiosum
- ⑦頸動脈孔
carotid groove
- ⑧正円孔
foramen rotundum
- ⑨斜台
clivus
- ⑩後床突起
posterior clinoid process
- ⑪鞍背
dorsum sellae
- ⑫トルコ鞍
sella turcica
- ⑬蝶形骨隆起
jugum of sphenoid
- ⑭前頭洞
frontal sinus
- ⑮板間層
diploe
- ⑯側頭骨の岩様部
petrous part of temporal
- ⑰蝶形骨の小翼
lesser wing of sphenoid



大腿骨 Femur 前面



- ①大腿骨頭 head of femur
- ②大腿骨頸 neck of femur
- ③轉子窩 trochanteric fossa
- ④大轉子 greater trochanter
- ⑤小轉子 lesser trochanter
- ⑥大腿骨體 shaft of femur



- ⑦膝蓋面 patellar surface
- ⑧內側窩 medial condyle
- ⑨內側上窩 medial epicondyle
- ⑩外側窩 lateral condyle
- ⑪外側上窩 lateral epicondyle

